



EyeVision

VET product catalogue

Innovative products – customer-friendly expertise and knowhow

We at EyeVision invite you to explore our selection of medical equipment and applications by top manufacturers in Finland and other European countries. We specialize in importing and reselling medical lasers, imaging systems, and optical products.

Our 25 years of experience in the field guarantee our customers the most innovative products, profound expertise and a solid level of service. Whatever the issue, our customers are always our top priority. For example, customer training is always provided to the extent required by the customer. We also offer extra training free of charge for the products we represent.



+358 10 212 7766



eyevision.fi



EyeVision Oy
Rauhalantie 4 B105
33480 Ylöjärvi
FINLAND



eyevision@eyevision.fi

Table of Contents

Loupes	4	Laboratory microscopes	18
Neitz BL series loupes	4	Motic B1 Elite	18
Galilean loupes	4	Motic 210 LED	18
Prism loupes	5	Motic 210 Digital	19
Optical products	5	Laser and ultrasound	20
Heine Omega 600 indirect ophthalmoscope	5	LIGHTLas 810 Diode laser	20
Neitz IO-a indirect ophthalmoscope	6	SK-Med SK-3000A ultrasound	20
Neitz IO-a CAM indirect ophthalmoscope with camera	6	Cryo devices	21
Neitz BX-series ophthalmoscope and retinoscope	7	CryolQ DermPlus Liquid Vet	21
CryoQ DermPlus Contact 1Vet	7	CryoQ DermPlus Contact 1Vet	21
Aspheric lenses	8	Tonometers	22
Volk Pan Retinal 2.2	8	iCare TONOVET	22
Volk 15D	8	iCare TONOVET Plus	22
Volk 20D	8	Eickemeyer products	23
Volk 30D	9	Eickemeyer equipment and supplies	23
Volk 30D Small	9	an-Vision products	24
Neitz 20D	9	an-HyPro eye gel	24
Ocular Koeeppe Gonio	9	an-Bandage contact lenses	25
an-Vision eye-surgical equipment	27	Rumex instruments	27
Imaging devices	10	Salli saddle chairs	28
Optomed Aurora IQ	10	Salli SwingFit	28
Optomed Smartscope PRO	12	Salli MultiAdjuster	28
VisuScience QuikVue Plus	13	Salli Solo	29
Salli Expert	29	Salli equipment	30
Operation microscopes	14	Technical details for Salli Saddle Chairs	30
Takagi OM-6	14		
Takagi OM-9	14		
Takagi OM-19	15		
Slit lamp microscopes	16		
Kowa SL-19	16		
SK-Med LS-1B	17		
VisuScience SL1911D	17		

Neitz BL series loupes

The lightness of the Neitz BL series and the high-quality optical precision make it a fine tool for almost all procedures requiring high accuracy. The BL loupes are easily adjusted for different users. The loupes may also be used with spectacles.



The Neitz BL-series loupes package includes:

- NEO or titan frames in different colours
- Adjustable focus
- Adjustable working distance 25-55 cm
- Magnification between 1.5 - 6.0x
- 3 different nose pad options
- NSI-X Led light with remote control and battery
- Protective shield
- Adjustment tools and a microfiber cloth
- Travel case

Galilean loupes

- Magnification 1.5 - 3.0x
- Optic with wide field of view and high depth of focus
- BLS-1, -2 and -3: adjustable working distance 35-55 cm
- BLD-3: adjustable working distance 25-35 cm



Prism loupes

- Magnification between 4.0 - 6.0x
- Bright picture from side to side using prism technology
- High depth of focus
- Adjustable working distance 35-55 cm



OPTICAL PRODUCTS

Heine Omega 600 indirect ophthalmoscope



Lighter. Brighter. Better. This is guaranteed by Heine Omega 600. The system is lightweight and maintenance-free. The Omega 600 offers new technological innovations as well as a new and unique visionBOOST, which makes it easier to make a clear diagnose even through dense cataract.

- Heine LED HQ light source
- Filters: red-free, cobalt blue, yellow
- Spot size: 16.5, 33 and 62.5 mm
- Working time up to 8 hours
- Weight: 475 g



Neitz IO-a indirect ophthalmoscope

The Neitz IO-a uses a LED light source, providing a very clear and realistic view. It is equipped with a battery pack that can be mounted to a headband or belt with an extension cable. IO-a is among the lightest wireless indirect ophthalmoscopes on the market.



- Light source: 3W white (warm white) LED
- Filters: UV, red-free, cobalt blue
- Spot size: 19, 50 and 80 mm (at the distance of 500 mm)
- Working time up to 10 hours
- Weight: 480 g

Neitz IO-a CAM indirect ophthalmoscope with camera

IO-a CAM is a camera version of IO-a, which allows saving HD video or still images. The image transfer program for Windows is included.



- Light source 3W white (warm white) LED
- Filters: UV, red-free, cobalt blue
- Spot size: 19, 39 and 60 mm (at a distance of 500 mm)
- Working time: 5 hours
- Weight: 730 g
- Effective pixels: 2.13 mpixel
- Max frame rate: 30fps (FHD 1920 x 1080)
- File Format: MP4 / AVI / JPG
- Foot pedal to save image/video

Neitz BX-series ophthalmoscope and retinoscope

The Neitz LED ophthalmoscopes and retinoscopes are equipped with bright LED light sources. They work with either C or AA series batteries.

Neitz BXa-13 LED ophthalmoscope

- C or AA battery-driven
- LED light source time of usage over 50 000 h
- 3-5 times brighter than halogen
- Light boost mode
- Diopter adjustment -36D and +35
- The Neitz polarizing filter decreases reflections on the cornea
- Polarizing filter, red free filter
- Normal aperture, small aperture, slit, scale, cobalt blue filter
- Weight 290 g with batteries



Neitz RX-3 LED retinoscope

- C or AA battery-driven
- LED light source time of usage over 50 000 h
- 3-5 times brighter than halogen
- Stepless 360-degree light angle adjustment 360
- Streak variations: divergent, convergent and parallel
- Weight 340 g with batteries



Volk Pan Retinal 2.2

- Field of view 56° / 73°
- Magnification 2,68x
- Laser spot magnification 0.37
- Working distance 40 mm
- Full balance between magnification and field of view, allowing inspection through a small pupil
- Colour options: black, blue, gold, green, violet, red, silver



Volk 15D

- Field of view 36° / 47°
- Magnification 3.13x
- Laser spot magnification 0.32x
- Working distance 50 mm
- High magnification helps in inspecting the macula and papilla
- For inspecting glaucoma
- Allows inspection through a small pupil
- Colour options: black



Volk 20D

- Field of view 46° / 60°
- Magnification 4.11x
- Laser spot magnification 0.24 x
- Working distance 72 mm
- Balanced magnification and field of view for general diagnostics
- Autoclavable versio available
- Colour options: black, blue, gold, green, violet, red and silver



Volk 30D

- Field of view 58° / 75°
- Magnification 2.15x
- Laser spot magnification 0.47x
- Working distance 30 mm
- Allows inspection through a small pupil
- Colour options: black



Volk 30D Small

- Field of view 44° / 57°
- Magnification 2.09x
- Laser spot magnification 0.48x
- Working distance 31 mm
- Allows inspection through a small pupil
- Colour options: black



NEITZ

Neitz 20D

- Field of view 60°
- Magnification 3.08x
- Working distance 70 mm



Ocular
Instruments

Ocular Koeppe Gonio

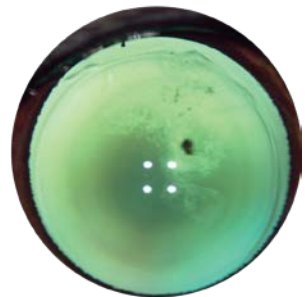
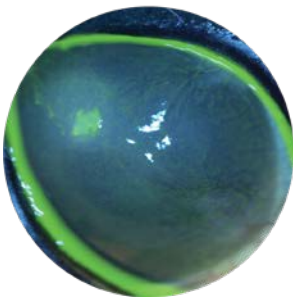
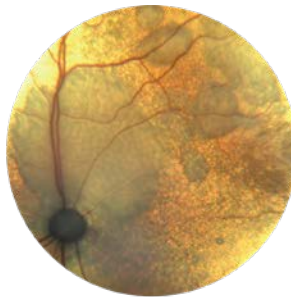
- Diameters: 12, 14, 17, 18 and 19 mm
- Magnification 1.50-1.70x
- Field of view 160°



Optomed Aurora IQ

Aurora is a new-generation portable imaging device for retinal- and eye surface imaging.

- Retinal module
- Eye surface module
- 50° field of view from retina
- Great high-resolution screen for quick-scanning of the picture
- Does not require pupil dilation
- WiFi picture transmission
- Precise, quiet and fast autofocus

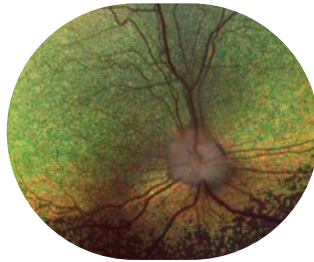




Optomed Smartscope PRO

Smartscope PRO is a small portable imaging device for retinal- and eye surface imaging. The EY4 retinal module provides precise images of the retina. The ES2 eye surface module allows imaging of the eye surface and lids.

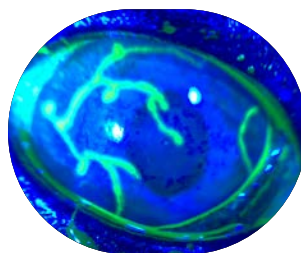
- EY4 retinal module
- ES2 eye surface module
- Also available with earlier generation's EY3 retinal module
- 45° field of view from retina
- Does not require pupil dilation
- WiFi picture transmission
- Precise and quiet autofocus



VisuScience QuikVue Plus

QuickVue Plus is a smartphone adaptor for scanning the eye surface and lids. It offers 10x magnification suitable for optometrists, doctors, pediatricians, and veterinarians for eye inspections. The special optical lens of QuickVue Plus is designed for taking clear pictures of the front eye and saving them on a smartphone.

- 10x magnification
- 2 levels of illumination (Warm White LED)
- Cobalt blue illumination for fluorescein imaging
- Adjustable air pads to fit most common smartphones
- Intergrated yellow filter



Takagi OM-6

OM-6 is a versatile basic-operation microscope for eyelid and eye surface surgeries.

- LED lightsource time of usage over 40 000 h
- High-quality wide-field optics
- 3-position magnification, 4.7x, 7.8x and 12.5x
- Electronical focus adjustment (direction Z)
- F = 200 mm
- 45-degree binoculars
- Illuminated area 55 mm
- Filters: Heat-Absorbing, Blue correction, Blue, Green (red-free)
- Max. reach 1045 mm
- Total weight 62 kg
- Several accessories available



Takagi OM-9

OM-9 is a middle-level operation microscope for all types of eye surgeries.

- LED light source time of usage over 40 000 h
- High-quality wide-field optic
- Electronic stepless magnification 4.1x – 20.4x
- Electronically driven X-Y motor.
- Electronical focus adjustment (direction Z)
- F = 200 mm
- Binoculars with tilting possibilities
- Illuminated area 60 mm
- Filters: Heat-Absorbing, Blue correction, Blue Cut, Retina shield
- Maximum reach 1045 mm
- Overall weight 90.5 kg
- Several accessories available



Takagi OM-19

OM-19 is a high-level operation microscope for all eye surgeries.

- LED light source time of usage over 40 000 h
- High-quality wide-field optic
- Electronic stepless magnification 4.1x – 20.4x
- Electronically driven X-Y motor
- Electronical focus adjustment (direction Z)
- F = 200 mm
- Binoculars with tilting possibilities
- Illuminated area 60 mm
- Filters: Heat-Absorbing, Blue correction, Blue Cut, Retina shield
- Maximum reach 1260 mm
- Overall weight 156.0 kg
- Several accessories available



Kowa SL-19

The new Kowa SL-19 is the lightest and most versatile carry-on slit lamp microscope.

- LED light source (white LED)
- Slit lamp angle adjustment +/- 60°
- Integrated magnifications 10x and 16x
- Pupil distance adjustment 55 – 72 mm
- The width of slit light 0.1, 0.2, 0.8 mm
- Spot size 1, 5, 12 mm
- Light intensity stairless adjustment 200 – 20 000 Lux
- Background light: white and blue LED, three different intensities
- Battery-operated, working time over 6 hours
- 5 colour choices: white, green, pink, blue and black
- Also available as SL-19 Plus model with an integrated camera



SK-Med LS-1B

The high-quality LS-1B microscope has excellent optics and versatile functions. It is also very light to use.

- LED light source (Warm White)
- Slit lamp angle adjustment +/- 60°
- Integrated magnifications 10x and 16x
- Pupil distance adjustment 45 – 78 mm
- The width of slit light: 0.15 mm, 0.5 mm, 0.8 mm, 1.6 mm, 12 mm circle and 1 x 1 square
- Filters: Grey, Red Free and Cobalt Blue
- Inbuilt IR and UV filters to protect the operator's own eyes
- Battery: Li-ion 7.4 V/950 mAh, working time more than three hours with a full battery
- Light weight, only 700 g with a battery
- Colour grey-white



VisuScience SL1911D

The portable VisuScience slight lamp has elegant design and high-quality optics. The lamp is equipped with a LED light source and a rechargeable Li-ion battery and recharging station.

- LED light source (Warm White)
- Slit lamp angle adjustment: +/- 60°
- Integrated magnifications 10x and 16x
- Pupil distance adjustment 50 – 74 mm
- The width of slit light: 0.15 mm, 0.5 mm, 0.8 mm, 1.6 mm, and 12 mm (circle) and 1 x 1 mm square
- Filters: Red Free, Cobalt Blue, Neutral density
- Stationary IR and UV filters
- Battery: Li-ion 7.4V / 1600 mAh, working time more than 6 hours
- Colour white



Motic B1 Elite

The basic series MOTIC B1 has been long on the market. The newer version of B1 Elite has both new optics and mechanics.

- Binocular adjustment for both oculars +/- 15 diopters
- Pupil distance adjustment 55 – 75 mm
- Objectives 4 x/0.10, 10x/0.25, 40x/0.65, 100 x 1.25
- Stage size 140 x 135 mm with upper limit stopper
- Fine focus precision, 2um increments
- 3 W LED illumination



Motic 210 LED

MOTIC BA210 LED microscope is one of the most popular microscope for veterinary clinics. The BA210 LED microscope with high-quality objectives is available with a large selection of accessories. It is also camera-ready.

- 30-degree tilted trinocular oculars, 360 degrees
- Pupil distance adjustment 55 – 75 mm
- High-quality achromat objectives 4x/0.10, 10x/0.25, 40x/0.65. Spring/oil
- Stage size 140 x 135 mm, with adjustable high-level limit
- 3W LED illumination
- Camera-ready
- Several accessories available



Motic 210 Digital

Motic BA210 Digital is the top model of the 210 series. It has both strong mechanics and an inbuilt camera.

- 3W LED illumination
- Quartz halogen enlightenment 6 V / 30 W
- CCIF EF-N Plan accromatic objectives
EF-N PL 4x, 10x, 40x S, 100x S-Oil
- 30 degree, tilted trinoculars with in-built digital camera CMOS 1/2
- Wide-degree oculars with binocular adjustments
- Camera 3 MP – 2048 x 1536 pixels with USB 2.0
- Motic Image Plus 2.0 program for PC and MAC



LIGHTLas 810 Diode laser

LightLas is a LightMed family product covering a wide selection of ophthalmic lasers. LIGHTLas 810 is an infra-red diode laser producing laser light at a wavelength of 810 nm. The equipment is excellent for treating glaucoma and retinal illnesses.



- Carry-on light console
- Touch-on colour display
- Attachments: Glaucoma probe, endo probes and LIO (Laser Indirect Ophthalmoscope)
- High-quality, self adjusting laser cavity
- Sub-Threshold micro pulse mode
- Wireless foot pedal

SK-Med SK-3000A ultrasound

LIGHTsonic creates high-quality A- and B-Scan pictures. It is light and easy to handle.

- A-Scan, 10 MHz
- B-Scan, 10 MHz
- Pachymetry, 25 MHz
- 12.1 high-resolution touch-on screen
- Footpedal



CryoIQ DermPlus cryo equipments are easy to use and very effective for different kinds of skin diseases. Due to its unique rebound structure, CryoIQ prevents gas leaks and maximizes the influence of the gas. The equipment is suitable for several medical uses.

CryoIQ DermPlus Liquid Vet

- Spray freezing, tip sized from 1 to 6



CryoIQ DermPlus Contact IVet

- Contact freezing with a 1 mm tip
- Contact freezing with a 3 mm tip
- Contact freezing with a 5 mm tip



CIQ-D-L-VET



CIQ-D-C1-VET



CIQ-D-C3-VET



CIQ-D-C5-VET

iCare TONOVET

Tonovet is a quick and easy tonometer for measuring eye pressure.

- Easy to use without calibration
- Small screen, easy to read
- Power source 4 x AA 1.5 V battery LR6
- Measuring range 0 - 99 mmHg
- Precision $\pm 2\%$ (5 - 30 mmHg) and $\pm 10\%$ ($> 30 - 80$ mmHg)
- Weight 250 g with batteries



iCare TONOVET Plus

iCare Tonovet Plus is a new-generation tonometer for measuring eye pressure. It is fast and easy to use. TONOVET Plus has an advanced user interface with a clear and easy-to-use display. With automatic capturing, the user can choose between individual readings or all the six different measurements at one push of a button.

- Easy to use without calibration
- Colours green and red indicate the correct measuring angle on the cornea
- Large and easy-to-use colour display
- Power source 4 x AA with 1.5 battery LR6
- Measuring range 10-60 mmHg
- Precision of measuring $\pm 2.5\%$ mmHg (10 - 30 mmHg) and $\pm 10\%$ ($> 30 - 60$ mmHg)
- Weight 230 g with a battery



Eickemeyer equipment and supplies

The German company Eickemeyer is one of the largest manufacturers and resellers of eye equipment and accessories for veterinary use. Their vast selection of products includes ophthalmologic equipment for research and treatment.

Please find more information about Eickemeyer products on our web page:

[eyevision.fi](https://www.eyevision.fi)



*We inspire vets
to improve the life of animals*



AN-VISION PRODUCTS

an-vision

an-HyPro eye gel

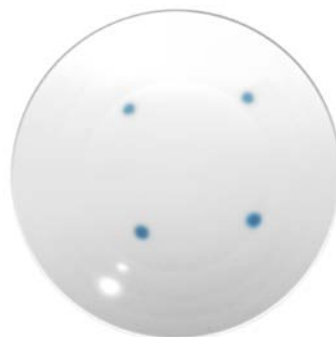
The long-term an-HyPro Eye Gel treats the animal eyes effectively. The gel can be used as often as necessary. It protects the cornea from uncleanliness or irritations caused by cold weather or dryness. an-HyPro may also be used for animals suffering from allergies.

- Effective and long-term care for the eyes of all animals.
- Due to the high viscosity, an-HyPro stays well on the eye surfaces.
- The gel contains 1.2 % hyaluronic acid.
- an-HyPro contains no preservatives but has a high shelf life.



an-Bandage contact lenses

The an-Bandage therapeutic contact lenses are for cats, dogs and horses. The surface of the lens protects the eye surface, for example, after an operation or a trauma. There are also dark UV-protected lenses.



For cats		Diameter	BC
10001212	an-bandage C1	16.0	9.2 mm
10001213	an-bandage C2	14.0	8.3 mm
10001214	an-bandage C3	15.5	8.5 mm
10001215	an-bandage C4	16.0	8.8 mm
10001216	an-bandage C5	18.9	9.4 mm

For dogs		Diameter.	BC
10001217	an-bandage D1	18.0	9.6 mm
10001218	an-bandage D2	18.0	9.8 mm
10001219	an-bandage D3	20.0	10.4 mm
10001220	an-bandage D4	15.5	8.5 mm
10001221	an-bandage D5	22.0	11.4 mm
10001222	an-bandage D6	22.0	11.8 mm
10001223	an-bandage D7	20.0	11.2 mm
10001224	an-bandage D8	20.0	10.8 mm
10001225	an-bandage D9	18.0	10.0 mm



an-Vision eye-surgical equipment

The German company an-Vision is one of the leading producers and resellers of eye products in the world.

The an-Vision family of products consists of IOL lenses, bandage contact lenses, instruments, and an-HyPro eye gels.

Please find more information of the an-Vision products on our web page:

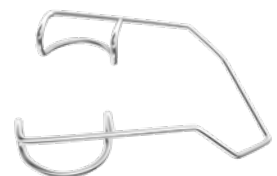
eyevision.fi



Rumex instruments

The American company Rumex International has produced ophthalmic instruments since 1994. You can find the entire collection of more than 2000 instruments on our web pages:

eyevision.fi



Salli SwingFit

- Available with standard or small size seats
- Two-part active chair supporting movement
- Seat width adjustment
- Seat covers materials: leather, artificial leather, fabric, ESD artificial leather or fabric
- Gas spring and base colours metal or black
- Maximum load 120 kg
- Weight 11 kg
- Warranty 10 years



Salli MultiAdjuster

- Available with standard or small size seats
- Inclination adjustment
- Seat width adjustment
- Seat cover materials: leather, artificial leather, fabric, ESD artificial leather or fabric
- Gas spring and base colours metal or black
- Maximum load 120 kg
- Weight 12 kg
- Warranty 10 years



Salli Solo

- Solid seat
- Available with inclination adjustment (tilt) or with active seat (swing)
- Seat cover materials: leather, artificial leather, fabric, ESD artificial leather- or fabric
- Gas spring and base colours metal or black
- Maximum load 120 kg
- Weight 10,3 kg
- Warranty 10 years



Salli Expert

- Seat options: Twin, MultiAdjuster or Small MultiAdjuster
- Seat cover material leather or artificial leather
- Hand- or foot-operated height adjustment
- Stretching support with elbow supports
- Maximum load 120 kg.
- Weight 16/17 kg
- Warranty 10 years



Salli equipment

Several accessories available for Salli chairs:

- Elbow rest
- All-round elbow rest
- Stretching Support for back stretching
- Top and Bottom height adjustments
- Foot support
- Gas springs of different lengths



Technical details for Salli Saddle Chairs

Seat cover materials	16 leather, 8 artificial leather, 5 ESD fabric choices
Gas spring	4 different lengths, colours: black and metal
Standard base colours	Black and metal
New base colours	Black and metal
Wheels	65 mm standard, different colours, different wheels available
Warranty	10 years



EyeVision

**Your Eyes
– Our Vision**

EyeVision



+358 10 212 7766



eyevision.fi



EyeVision Oy
Rauhalantie 4 B105
33480 Ylöjärvi
FINLAND



eyevision@eyevision.fi