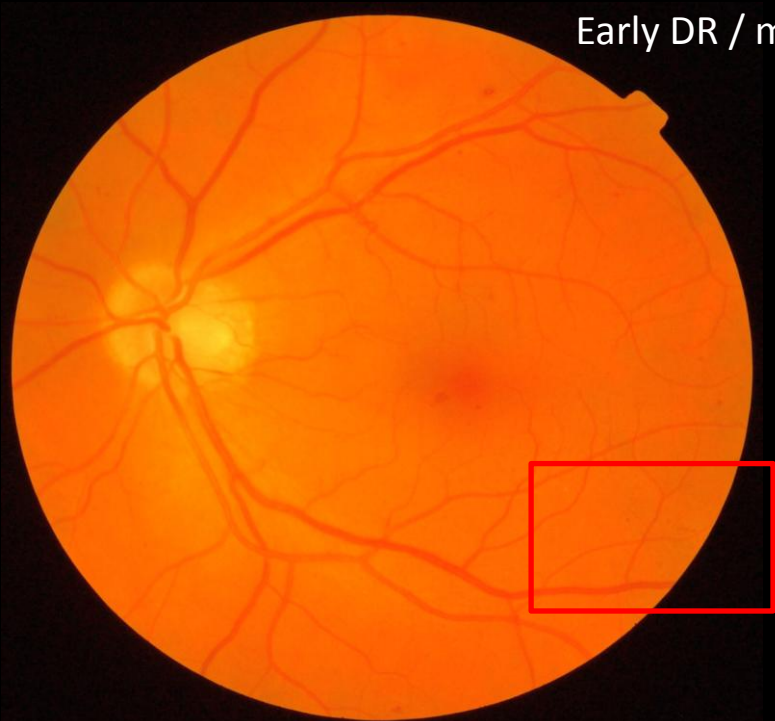


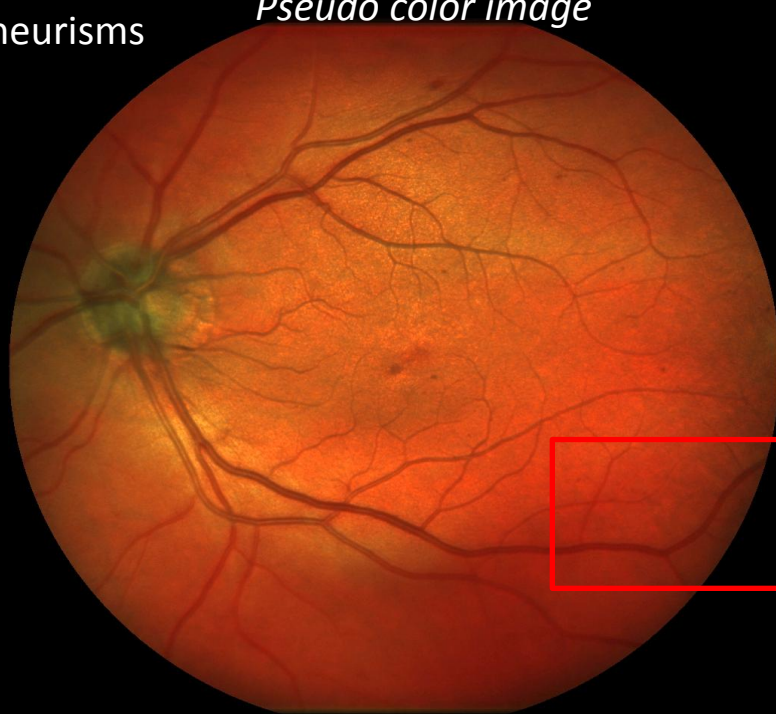
FUNDUS CAMERA after MYDRIASIS

Early DR / microaneurisms



EASYSCAN - Non-Myd

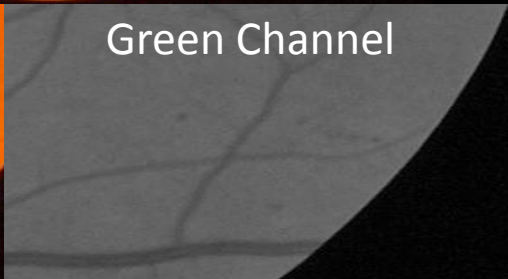
Pseudo color image



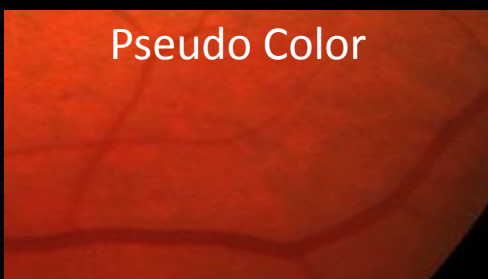
White Light



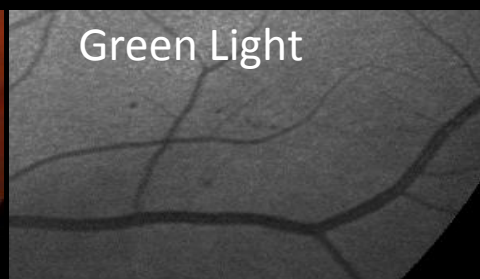
Green Channel



Pseudo Color



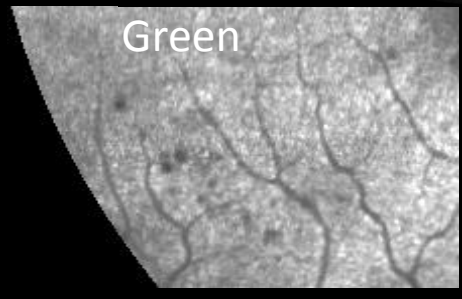
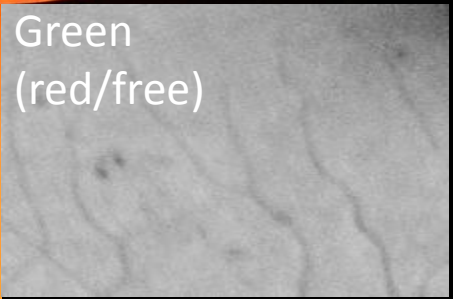
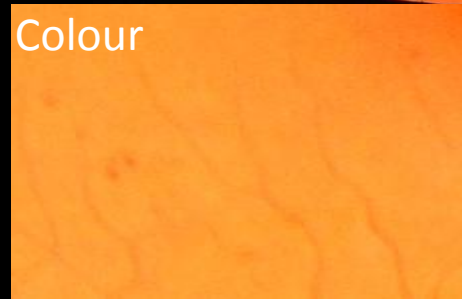
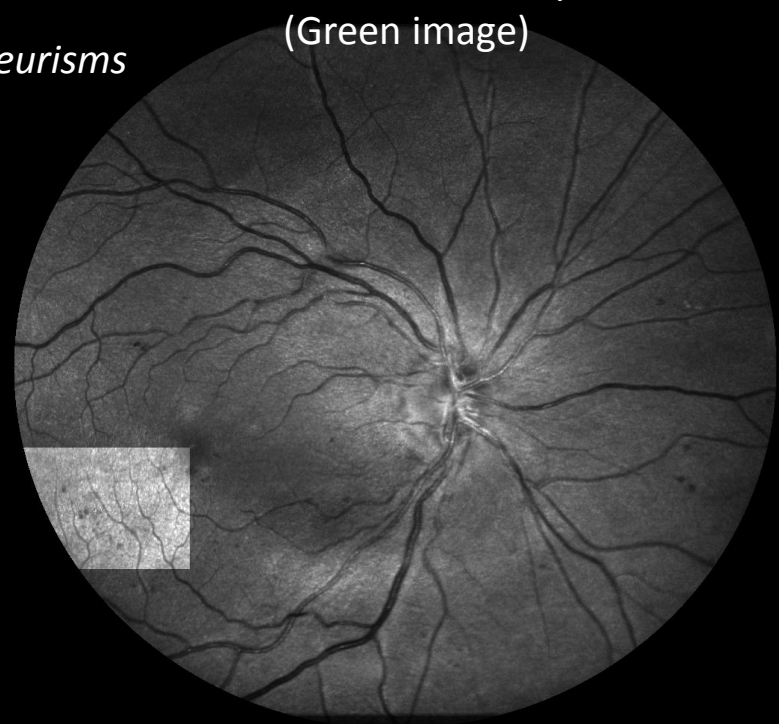
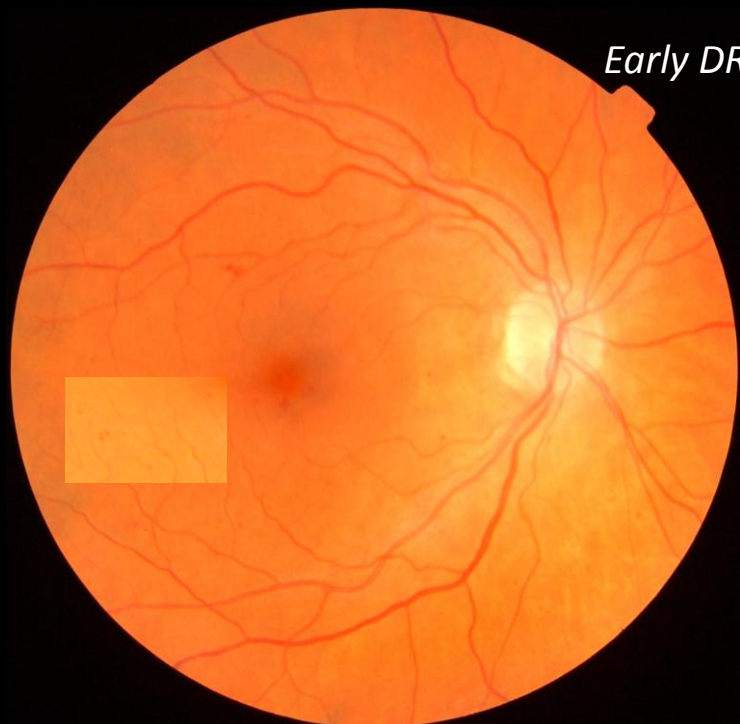
Green Light



FUNDUS CAMERA after MYDRIASIS

EASYSCAN - Non-Myd
(Green image)

Early DR / microaneurisms



Colour

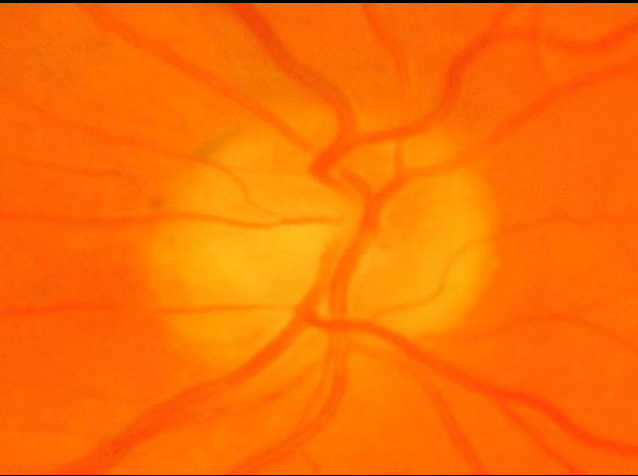
Green
(red/free)

Green

Pseudo colour

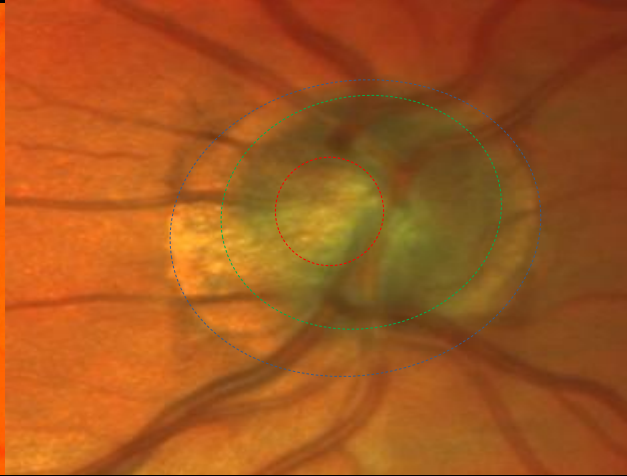
Papilsegmentatie ivm glaucoom screening

Mydriatic fundus colour image



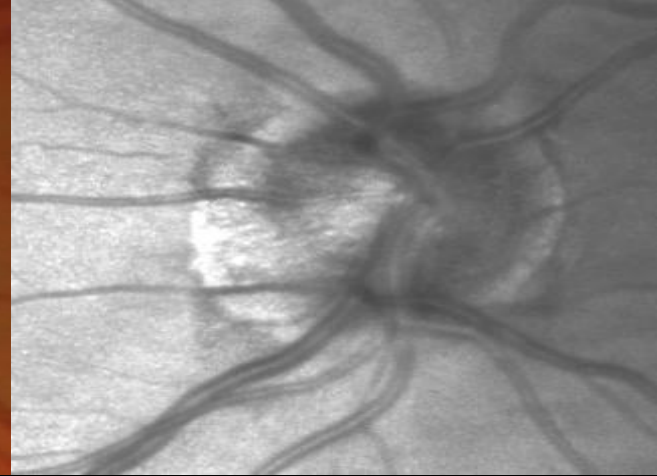
Rim?
Disk?
Cup?

Zero dilation SLO image,
pseudocolour



Rim
Disk
Cup

Zero dilation SLO image,
infrared

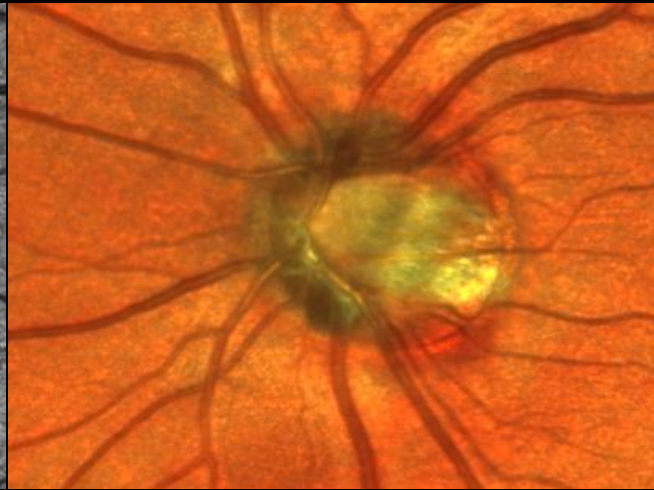
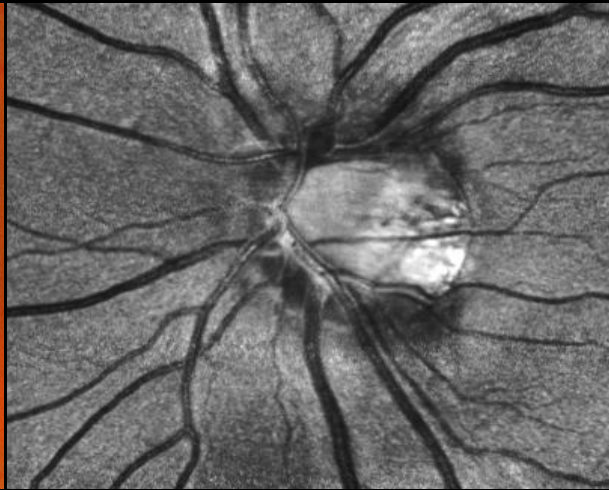


Segmentatie lijkt goed
mogelijk

Papil

Funduscam

easyscan

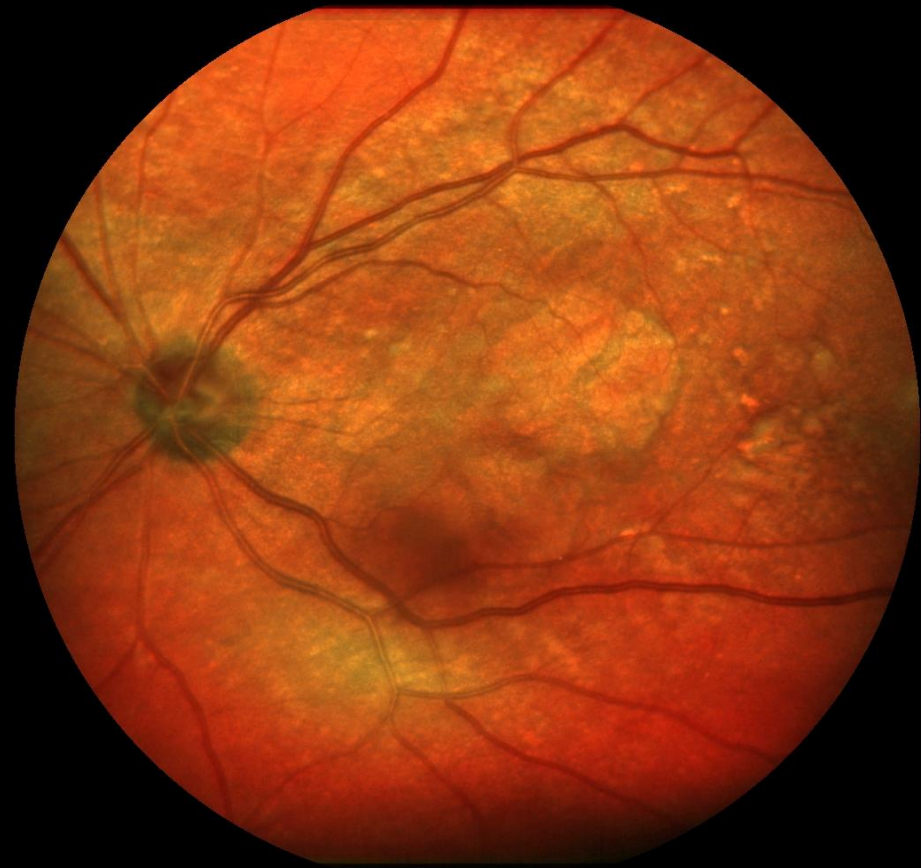


Maculopathy

Fundus Camera



EASySCAN



easyscan

Maculopathy

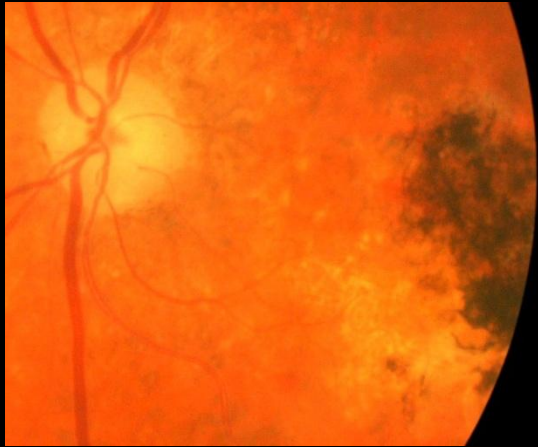


OD Green Central

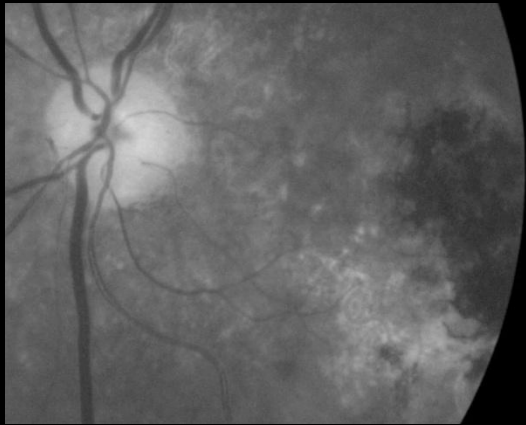


OD Infrared Central

Fundus Camera

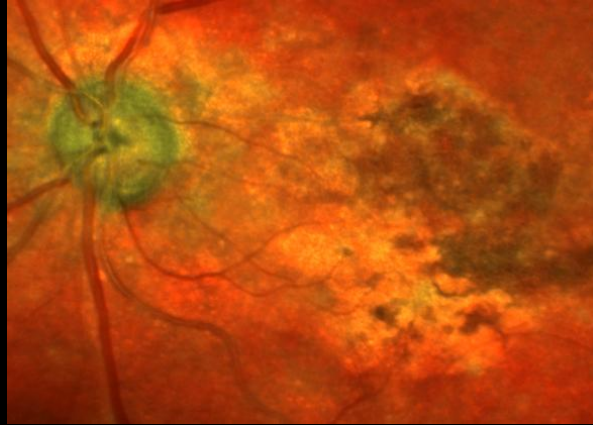


Colour

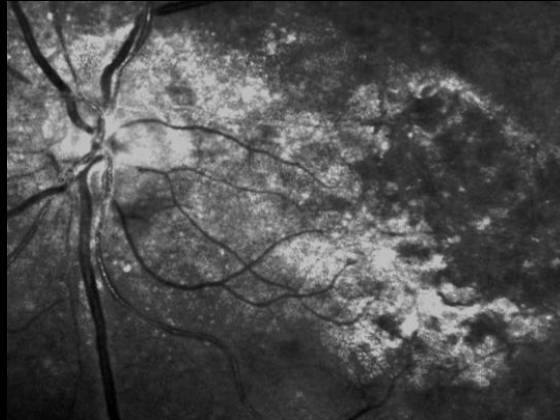


Red Free

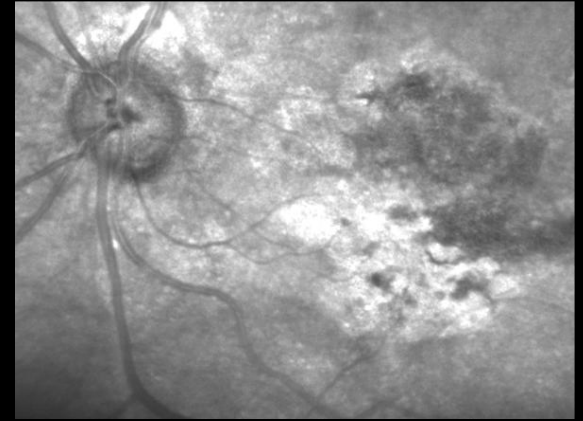
easyscan



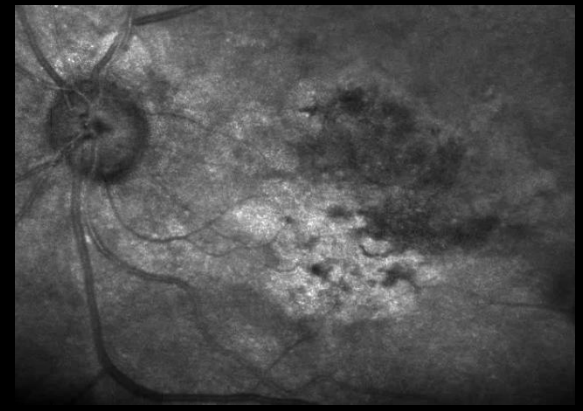
OS Colour



OS Green



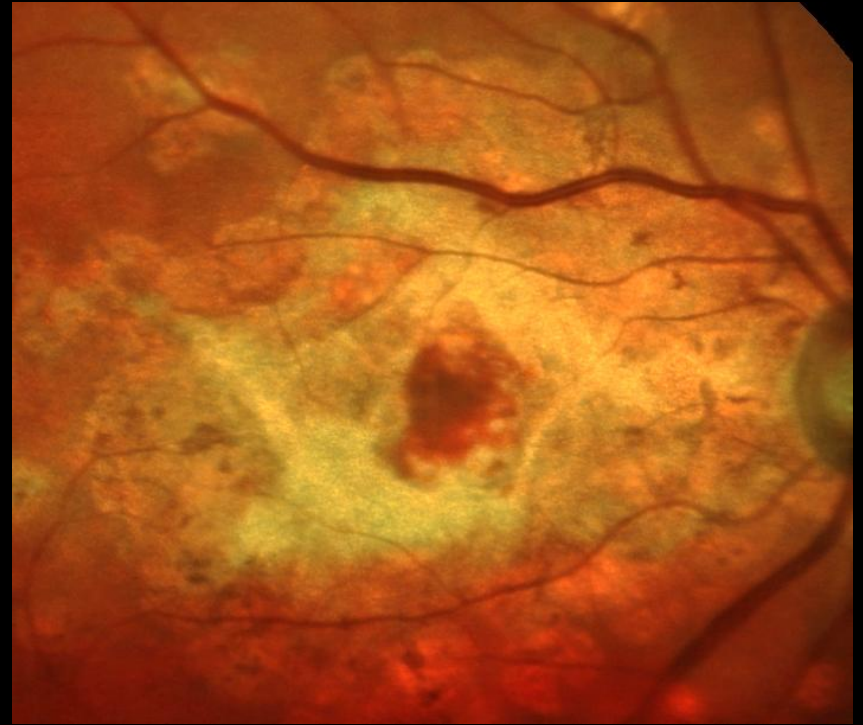
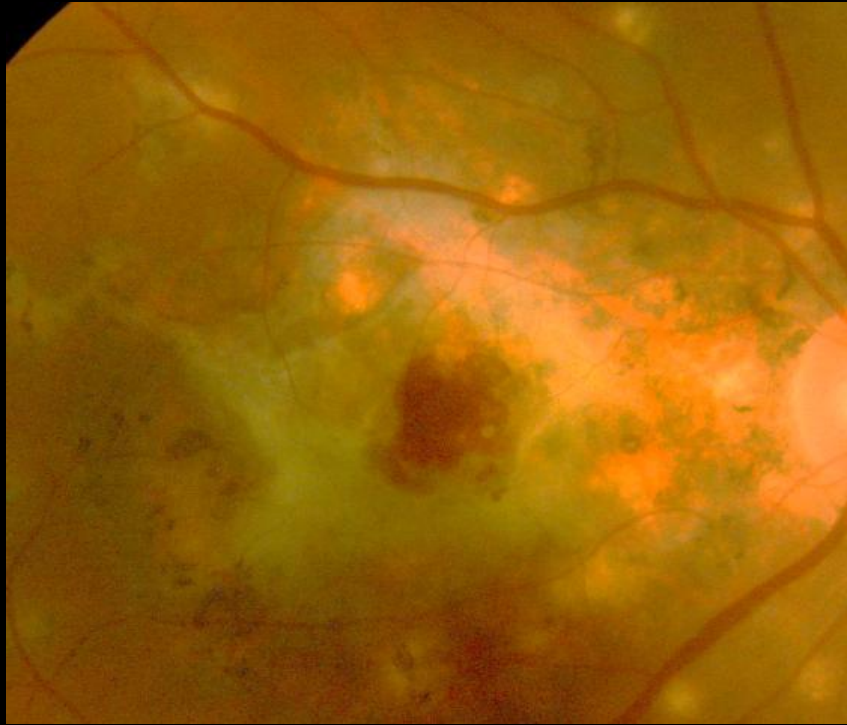
OS Infrared



OS Movie

Fundus Camera

easyscan



Detailed View